

About Marline Engineering Newcastle
At Marline, we take a comprehensive approach when designing your new development.

With in-house electrical, mechanical and hydraulic engineers, Marline Engineering makes your engineering design needs a breeze. We are able to adjust, implement and create designs on AutoCAD and REVIT which makes it easy for contractors and builders to build our designs.

We advise you on the most affordable, practical and effective solutions and systems based on the site and legal factors.

As consulting engineers, Marline has also expanded the range of services to provide a wide range of building services disciplines including Air-conditioning, Electrical, Hydraulics, Fire Protection and Lift Services.

Marline has seen a huge amount of growth in the Energy sector. We provide services that go above and beyond the standard regulatory requirements and offer unique solutions to your Section J or JV3 Alternative solution reports. We also offer a fast NABERS and BEEC certification that ensures advertising for commercial properties are fully compliant with the CBD advertising rules and regulations.

With engineering consulting experience that dates back as far as 1975, we're one of the best engineering companies in Australia, and have developed the kind of projects that residential and commercial property developers benefit from.

Our Newcastle engineering firm continues to grow, however our team prides itself on every customer receiving the kind of high quality workmanship and personalised service that our company is known for.

To accommodate the expansion and demand for engineering services within Newcastle and throughout New South Wales, Marline Engineering has almost doubled the number of highly trained employees in the last five years.

Our engineering firm currently employs ten engineers, eight technical assistants and an office administrator. As a result, we continue to be leaders amongst engineering companies in Australia, with a large portfolio and a positive attitude.

PROJECT No:
MN14834

CLIENT:
WEDGETAIL PROJECT CONSULTING

ARCHITECT:

MECHANICAL - ELECTRICAL - HYDRAULIC - FIRE - ENERGY - NABERS - STORMWATER - SECTION J - BEEC

Fire Sprinkler Services

PROPOSED EXTENSION WOOD WASTE PROCESSING BUILDING ANL TEA GARDENS, PINDIMAR ROAD, TEA GARDENS, NSW 2324

DRAWING SCHEDULE

FS-00-000	COVER SHEET
FS-00-001	LEGEND & NOTES
FS-10-001	WOOD WASTE PROCESSING BUILDING - FIRE SPRINKLER LAYOUT

100% ISSUE

FIRE SPRINKLER SERVICES

NOTE: SOME ITEMS MAY NOT BE USED

LINETYPES - EXISTING

	SPRINKLER
	WINDOW DRENCHER
	DISUSE PIPE

LINETYPES - NEW

	SPRINKLER
	WINDOW DRENCHER

SYMBOLS

	DELETED EXPOSED SPRINKLER
	EXISTING EXPOSED SPRINKLER
	NEW EXPOSED SPRINKLER
	DELETED CONCEALED SPRINKLER
	EXISTING CONCEALED SPRINKLER
	NEW CONCEALED SPRINKLER
	DELETED FULLY RECESSED CEILING SPRINKLER
	EXISTING FULLY RECESSED CEILING SPRINKLER
	NEW FULLY RECESSED CEILING SPRINKLER
	DELETED SIDE WALL SPRINKLER
	EXISTING SIDE WALL SPRINKLER
	NEW SIDE WALL SPRINKLER
	DELETED WINDOW/WALL WETTING DRENCHER
	EXISTING WINDOW/WALL WETTING DRENCHER
	NEW WINDOW/WALL WETTING DRENCHER
	ALARM STROBE
	FIRE INDICATOR PANEL
	SPRINKLER PUMP SET
	SPRINKLER VALVE SET
	SPRINKLER TEST POINT

SYMBOLS - FIRE

	BOOSTER ASSEMBLY
	PUMP SET
	VALVE SET
	TEST POINT
	ALARM STROBE
	SINGLE PILLAR HYDRANT (INTERNAL)
	DOUBLE PILLAR HYDRANT (EXTERNAL)
	STREET HYDRANT
	FIRE HOSE REEL
	THRUST BLOCK
	FIRE INDICATOR PANEL

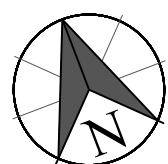
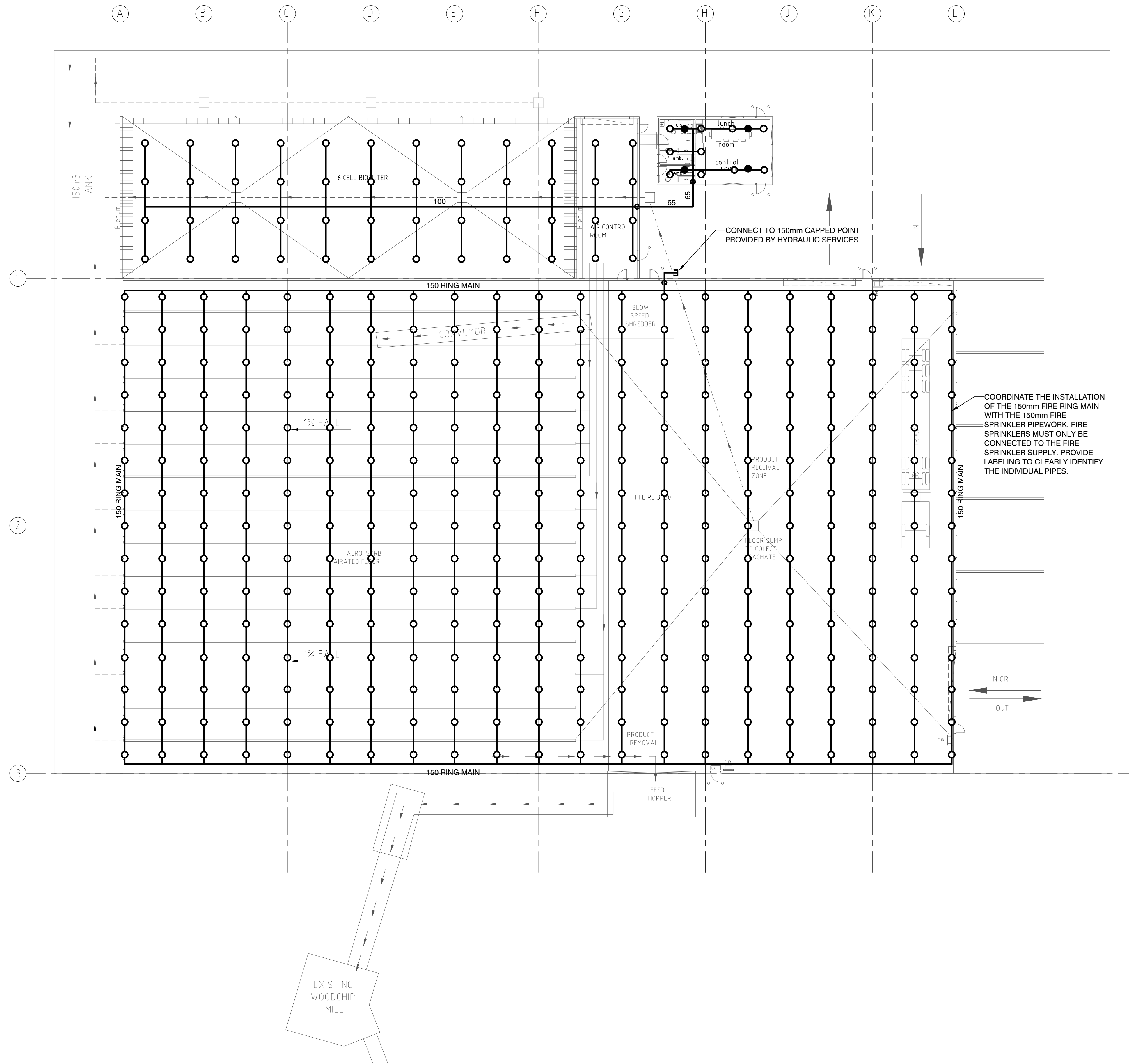
ABBREVIATIONS

e	EXISTING.
SVS	SPRINKLER VALVE SET.
WD	WINDOW DRENCHER.
WDE	WINDOW DRENCHER EXTERNAL.
WDI	WINDOW DRENCHER INTERNAL.

GENERAL NOTES

- ALL RANGE PIPES TO ONE HEAD SHALL BE 25mm UNLESS NOTED OTHERWISE.
- ALLOW TO DRAIN DOWN. TEST, REFILL & COMMISSION THE SYSTEM & RECHARGE AS NECESSARY TO UNDERTAKE THE WORKS REQUIRED.
- ALLOW TO SUPPLY & INSTALL AS ADDITIONAL 20 SPRINKLER HEADS FOR COORDINATION.
- SPRINKLER HEAD IN CEILING SHALL BE LOW PROFILE MINIMATICS TYPE WITH TWO PIECE ESCUTCHEON PLATE. THE HEADS & ESCUTCHEON PLATES SHALL BE POWDER COATED TO A COLOUR NOMINATED BY THE ARCHITECT.
- NUMBER & LOCATIONS OF HEADS OF PIPEWORK IS INDICATIVE ONLY. IT IS THE CONTRACTOR'S RESPONSIBILITY TO ENSURE COMPLIANCE WITH AS2118.4 - RESIDENTIAL CODE. THE CONTRACTOR IS TO SUBMIT WORKSHOP DRAWINGS OF THE PROPOSED DESIGN & CALCULATIONS FOR APPROVAL PRIOR TO COMMENCEMENT OF WORKS. ALL SPRINKLERS TO BE LOCATED CLEAR OF ALL LIGHT FITTINGS, EXIT SIGNS ETC WHICH WILL IMPEDE OPERATION OF THE HEADS.
- IT IS THE CONTRACTORS RESPONSIBILITY TO FULLY COORDINATE THE LOCATION OF ALL SPRINKLER HEADS & PIPEWORK WITH OTHER SERVICES (ie. STRUCTURAL, LIGHT FITTINGS, SMOKE DETECTORS ETC) PRIOR TO THE INSTALLATION OF ANY WORKS.
- OPERATION & MAINTENANCE MANUALS. MANUALS & DRAWINGS SHALL BE PRODUCED & SUBMITTED IN ACCORDANCE WITH THE SUPERINTENDENT'S REQUIREMENTS.
- INSTALLATION TO COMPLY WITH THE REQUIREMENTS OF AS2118.
- NOTE VOID SPRINKLERS HEADS SHALL BE IN ACCORDANCE WITH THE HAZARD CLASSIFICATION REQUIRED UNDER AS2118.1-2017 AND INCORPORATE APPROVED PROTECTION METAL GUARD
- SPRINKLER CONTRACTOR TO RUN WIRING TO FIP. COORDINATE WITH ELECTRICIAN.
- EXACT POSITION OF CEILING SPRINKLER HEADS SHALL BE DETERMINED FOLLOWING INSTALLATION OF ROOF TRUSSES & CONFIRMATION OF SKYLIGHT SHAFT LOCATIONS. COORDINATE WITH OTHER SERVICES & OBTAIN APPROVAL PRIOR TO INSTALLATION.
- DENOTES FIRE STOP COLLAR WHERE PVC PIPE PENETRATES FIRE RATED WALL.
- FINAL SPACING & COVERAGE OF ROOF SPACE FIRE SPRINKLERS SHALL BE IN ACCORDANCE WITH AS2118.1 "LIGHT HAZARD" PROTECTION.
- FINAL SPACING & COVERAGE OF BELOW CEILING SPRINKLERS SHALL BE IN ACCORDANCE WITH AS2118.1.
- ALL SPRINKLER HEADS TO BE MIN 300mm FROM ANY SUPPLY AIR DIFFUSER.
- ALL SPRINKLER WITHIN 600mm OF A SUPPLY DIFFUSER TO BE RATED AT 79°C.

MECHANICAL — ELECTRICAL — HYDRAULIC — FIRE — ENERGY — NABERS — STORMWATER — SECTION J — BEEC



Rev	Date	Reason for Issue
4	21.08.24	100% ISSUE
3	02.07.24	100% ISSUE FOR REVIEW
2	19.06.24	REVISED AS REQUESTED
1	11.06.24	50% ISSUE FOR REVIEW

JC	CB	DW
JC	CB	
JC	CB	
JC	CB	
Drawn	Design	Verify

Project
PROPOSED EXTENSION WOOD WASTE PROCESSING BUILDING
ANL TEA GARDENS
PINDIMAR ROAD, TEA GARDENS, NSW 2324

Drawing Title
**WOOD WASTE PROCESSING BUILDING
FIRE SPRINKLER LAYOUT**

Discipline	Scale	Rev
FIRE SPRINKLER SERVICES	1:200 @ A1	
Job No.	Drawing No.	Rev
MN14834	FS-10-001	4